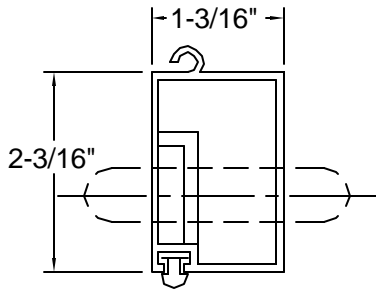


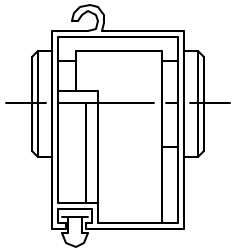
P	H
10"	TO 3'-5"
11"	3'-6" - 7'-9"
12"	7'-10" - 10'-6"

USE THIS TABLE AS A GENERAL GUIDE ONLY
CONSULT MANUFACTURER FOR SPECIFIC
APPLICATIONS. FOR COIL ABOVE CEILING
CONDITION DO NOT SPECIFY HOODS

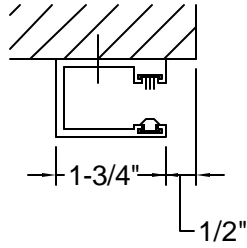
**BOTTOM BARS
AND
LOCKING METHODS**



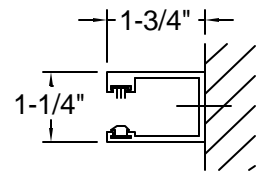
**STD. SLIDE BOLTS
FROM INSIDE
OR OUTSIDE**



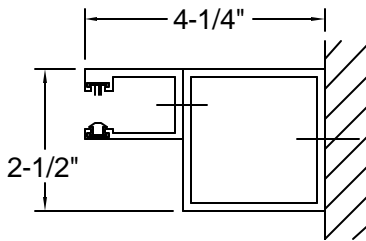
**MASTER KEYABLE
CYLINDER LOCKING
FROM BOTH SIDES**



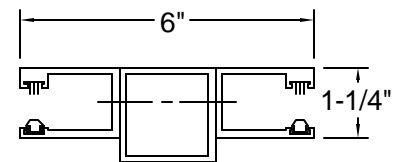
**FACE
MOUNTED**



**BETWEEN
JAMB**



**HAND CRANK
BETWEEN JAMB**



**STATIONARY
MULLION**