



# ASH100

## TECHNICAL SALES

The clear lines of the flat aluminum ASH100 slat profile fill an opening with a balanced appearance.

The ASH100 and ASH200 models have the same visual profile and slat height of 1-1/4" however, the ASH100 has a reduced slat depth for a tighter coil and ideal for openings less than 9'-0" (2,740 mm) in width and 5'-0" (1,524 mm) in height.

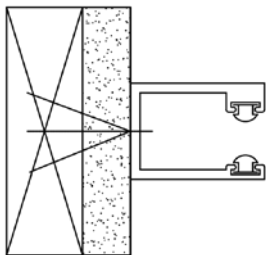
Common applications are counter-top installations at bars, serveries, and reception desks. This model is also widely used for retail kiosks and can be designed into a millwork for smaller openings. The extruded bottom bar profile is designed for a two-point lock mechanism that accepts a 1" diameter mortise cylinders with an adams rite cam.

The ASH100 model is design for manual push up and pull down operation. A torsion spring counter-balances the weight of the shutter for ease of operation.

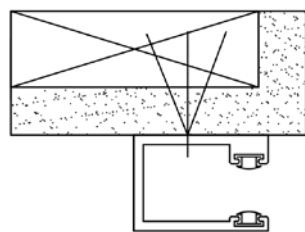
Opening Width (Feet)

	1	2	3	4	5	6	7	8	9
1									
2									
3									
4									
5									

	A	B	C
	6-1/2"	6-1/2"	3"
	7-1/2"	7-1/2"	3"



Between Jamb Mount



Face of Wall Mount

